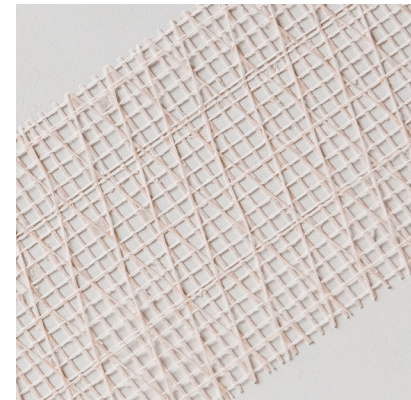


## TECHNICAL DATA SHEET

### Properties

- Increased strength - 60% stronger than standard mesh
- Patented multidirectional pattern - Additional fiberglass and extra adhesive assist offset lateral movement in a crack, increasing joint strength and structural integrity
- Wider width - Provides increased gap coverage and stress distribution
- High performance adhesive - Maximum hold and easy application/works well in fluctuating temperatures
- Self-adhesive - Easy application
- Reduced dry time - Embedding coat is not required



Edited by:  
SAINT-GOBAIN ADFORS America

SAINT-GOBAIN ADFORS America  
1795 Baseline Road  
Grand Island, NY 14072 USA  
Tel: 716-775-3900  
Fax: 716-775-3901  
www.adfors.com

SAINT-GOBAIN ADFORS America reserves the right to change the information given herein without prior notice

Technical Data Sheet  
Last update: 03/26/19

### General Description

FibaTape® Extra Strength drywall tape features a wider width and patented, multi-directional design for increased strength and structural integrity.

### Technical Characteristics

PROPERTY	IMPERIAL	METRIC	TESTING
Fabric Technology	knit/tri-directional		
Construction	9x8 knit/2x6 LS		
Warp Tensile	50 lb/in	438 N/5cm	
Weft Tensile	90 lb/in	788 N/5cm	
Weight	2.95 oz/yd <sup>2</sup>	100 g/m <sup>2</sup>	
Thickness	0.018 in	0.457 mm	
Coating	SBR Latex		
Adhesive	HM		